

Extreme Performance Summer

You want extreme dry street performance and are willing to trade some comfort and hydroplaning resistance to get it.

Not intended to be driven in snow or on ice, or at high speeds in deep standing water, these specially tuned tires combine big-block tread designs with aggressive tread compounds and reinforced internal constructions to emphasize dry road response, traction, handling and high speed capabilities for serious driving enthusiasts.



BFGoodrich
g-Force Rival S 1.5
UTQG 200 AA A



BRIDGESTONE
Potenza RE-71RS
UTQG 200 AA A



Continental
ExtremeContact Force
UTQG 200 AA A



FALKEN
Azenis RT615K+
UTQG 200 AA A



FALKEN
Azenis RT660
UTQG 200 AA A



GOODYEAR
Eagle F1 Supercar 3
UTQG 220 AA A



HANKOOK
Ventus R-S4
UTQG 200 AA A



KUMHO TIRE
Ecsta V730
UTQG 200 AA A



MICHELIN
Pilot Sport Cup 2
Connect (240)
UTQG 240 AA A



MOTORSPORT NANKANG
Sportnex CR-S
UTQG 200 AA A



NEXEN
N FERA Sport R
UTQG 200 AA A



TOYO TIRES
Proxes R1R
UTQG 200 AA A

Max Performance Summer

You want an unsurpassed blend of dry and wet street traction and handling and only the finest will do.

Not intended to be driven in snow or on ice, these technologically advanced ultra low profile, high speed tires combine computer developed designs and unique materials with precision manufacturing techniques to provide an unsurpassed blend of dry and wet traction and handling.



YOKOHAMA
ADVAN A052
UTQG 200 AA A



YOKOHAMA
ADVAN Neoova AD09
UTQG 200 AA A



BRIDGESTONE
Potenza RE050A
Potenza RE050A RFT
UTQG 140 AA A



BRIDGESTONE
Potenza Sport
UTQG 300 AA A



Continental
ContiSportContact 3
UTQG 280 AA-AA A



Continental
ContiSportContact 5P
ContiSportContact 5P SSR
UTQG 280-240 AA-AA A



Continental
ExtremeContact Sport
UTQG 340 AA A



Continental
ExtremeContact Sport 02
UTQG 340 AA A



GOODYEAR
Eagle F1 Asymmetric 2
UTQG 300-240 AA A



GOODYEAR
Eagle F1 Asymmetric 3
Eagle F1 Asymmetric 3
RunOnFlat
UTQG 300-240 AA A



GOODYEAR
Eagle F1 Supercar EMT
UTQG 220 AA A



HANKOOK
Ventus V12 evo2
UTQG 320 AA A



KUMHO TIRE
Ecsta PS91
UTQG 260 AA A



MICHELIN
Pilot Sport PS2
Pilot Sport PS2 ZP
UTQG 220 AA-AA A



MICHELIN
Pilot Sport 4S
Pilot Sport 4S ZP
UTQG 300 AA A



MICHELIN
Pilot Super Sport
Pilot Super Sport ZP
UTQG 300 AA A



PIRELLI
P Zero
P Zero Run Flat
UTQG 320-160 AA A



PIRELLI
P Zero (PZ4)
P Zero Run Flat (PZ4)
UTQG 320-160 AA A



PIRELLI
P Zero Nero GT
UTQG 280-220 AA A



PIRELLI
P Zero Rosso Asimmetrico
P Zero Rosso Asimmetrico
(Collezione)
UTQG 300-160 AA A



PIRELLI
P Zero Rosso Direzionale
P Zero Rosso Direzionale
(Collezione)
UTQG 220-160 AA A



TOYO TIRES
Proxes Sport
UTQG 240 AA A



VREDESTEIN TIRES
Ultrac Vorti R+
UTQG 220 AA A



VREDESTEIN TIRES
Ultrac Vorti+
UTQG 320 AA A



YOKOHAMA
ADVAN Apex V601
UTQG 280 AA A



YOKOHAMA
ADVAN Sport V105
UTQG 280-240 AA-AA A

Ultra High Performance Summer

You want an outstanding blend of dry and wet street traction and handling.

Not intended to be driven in snow or on ice, these ultra-low profile, high-speed tires are designed to provide quick steering response and good cornering stability, as well as excellent dry and wet traction and handling.



DUNLOP
Direzza DZ102
UTQG 480-460 A A



FALKEN
Azenis FK510
UTQG 300 AA A



Firestone
Firehawk Indy 500
UTQG 340 AA A



GENERAL TIRE
G-MAX RS
UTQG 360 AA-A A



KUMHO TIRE
Ecsta PS31
UTQG 400 A A



Laufer
S FIT AS
UTQG 500 A A



NITTO
Nitto NT555 G2
UTQG 320 AA A



PIRELLI
Cinturato P7 Run Flat
UTQG 260 AA A



SUMITOMO TIRES
HTR Z5
UTQG 320 AA A



YOKOHAMA
ADVAN Fleva V701
UTQG 300 AA A

Ultra High Performance All-Season

You want all-season versatility (including light snow traction) and are willing to trade some dry and wet traction and handling to get it.

Branded with the M+S symbol, these ultra-low profile tires are designed to provide year round traction (even in light snow) through tread designs and compounds that remain more flexible in the cold weather to help blend all-season traction with very good handling and high-speed capabilities.



BFGoodrich
g-Force COMP-2 A/S PLUS
UTQG 400 A A



BRIDGESTONE
Potenza Sport AS
UTQG 500 AA A



BRIDGESTONE
Potenza RE980AS+
UTQG 500 AA A



Continental
ExtremeContact DWS
06 Plus
UTQG 560 AA A



Continental
SureContact RX
UTQG 560 AA A



COOPER TIRES
Zeon RS3-G1
UTQG 500 AA A



FALKEN
Azenis FK460 A/S
UTQG 500 A A



FUZION
UHP Sport A/S
UTQG 380 A A



GENERAL TIRE
G-MAX AS-05
UTQG 500 AA A



GENERAL TIRE
G-MAX AS-07
UTQG 500 AA A



GOODYEAR
Eagle Exhilarate
UTQG 500 AA A



GOODYEAR
Eagle F1 Asymmetric
All-Season
UTQG 500 AA-A A



GOODYEAR
Eagle Sport
All-Season
UTQG 560 A A



GOODYEAR
ElectricDrive GT
UTQG 500 A A



HANKOOK
Ventus S1 noble2
UTQG 700-500 AA-B A



KUMHO TIRE
Ecsta PA51
UTQG 50Z0 AA A



MICHELIN
Pilot Sport A/S 3+
Pilot Sport A/S 3+ ZP
UTQG 500 AA A



MICHELIN
Pilot Sport All Season 4
UTQG 540 AA A



NITTO
Neo Gen
UTQG 280 AA A



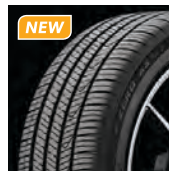
PIRELLI
Cinturato Strada Sport
All-Season
UTQG 500 AA A



PIRELLI
P Zero All-Season
Plus
UTQG 500 AA-A A



PIRELLI
P Zero All-Season
Plus Elect
UTQG 500 AA A



PIRELLI
P Zero AS Plus 3
UTQG 560 AA A



PIRELLI
P Zero Nero All-Season
Run Flat
UTQG 400 AA A



RIKEN
Raptor ZR A/S
UTQG 300 A A



SUMITOMO TIRES
HTR A/S P03
UTQG 540 A A



VREDESTEIN TIRES
Hypertrac All-Season
UTQG 500 AA A



YOKOHAMA
ADVAN Sport A/S+
UTQG 440 AA A

High Performance Summer

You want a good blend of dry and wet street performance when “re-tiring” your sports coupe or sedan.

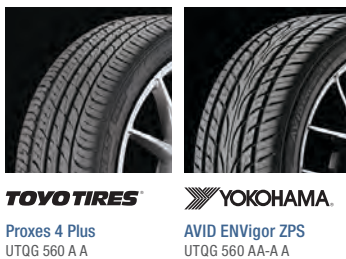
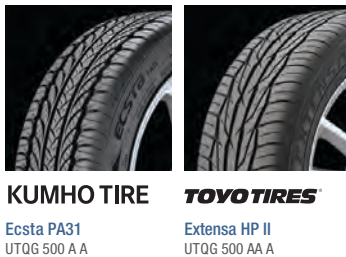
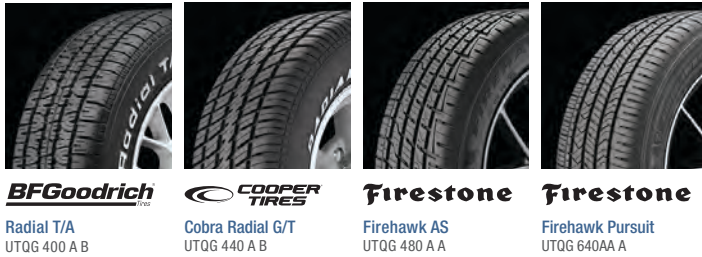
Not intended to be driven in snow or on ice, these low profile tires are designed to provide responsive handling and crisp steering response in both wet and dry conditions.



High Performance All-Season

You want all-season versatility (including light snow traction) to drive your sports coupe or sedan in all weather conditions.

Branded with the M+S symbol, these low profile tires are designed to provide year-round traction (even in light snow) through tread designs and compounds that remain flexible in cold weather to help blend all-season traction with good handling.



Grand Touring Summer

You want a good blend of dry and wet street performance along with responsive handling and noise and ride comfort.

Not intended to be driven in snow or on ice, these tires are designed to blend a performance tire's appearance with a passenger tire's smooth, quiet ride. Grand Touring tires are often used as Original Equipment and place more emphasis on handling and high-speed capabilities than Standard Touring tires.



Grand Touring All-Season

You want all-season versatility (including light snow traction) and responsive handling along with noise and ride comfort.

Branded with the M+S symbol and capable of providing year-round traction (even in light snow), these tires are designed to blend a performance tire's appearance with a passenger tire's smooth, quiet ride. Grand Touring All-Season tires are often used as Original Equipment and place more emphasis on handling and high-speed capabilities than Standard Touring tires.



BFGoodrich
Advantage T/A
UTQG 560 A A

BFGoodrich
Advantage Control
UTQG 700 B A



BRIDGESTONE
Ecopia EP422 Plus
UTQG 640-540 A A



BRIDGESTONE
Turanza QuietTrack
UTQG 800 A A



BRIDGESTONE
Turanza EV
UTQG 500 A A



BRIDGESTONE
WeatherPeak
UTQG 700 A A



Continental
ContiProContact
ContiProContact SSR
UTQG 540-400 AA-A A



Continental
PureContact LS
UTQG 700 A A



COOPER TIRES
CS5 Ultra Touring
UTQG 640-500 A A



COOPER TIRES
Endeavor
UTQG 680 A A



FALKEN
Ziex ZE960 A/S
UTQG 540A A



Firestone
Champion Fuel Fighter
UTQG 600 A A



Firestone
WeatherGrip
UTQG 640 A A



FUZION
Touring A/S
UTQG 500 A A



GENERAL TIRE
Altimax 365 AW
UTQG 540 A A



GENERAL TIRE
Altimax RT43
UTQG 700-600 A A



GENERAL TIRE
Altimax RT45
UTQG 600 A A



GENERAL TIRE
G-MAX Justice AW
UTQG 540 A A



GOODYEAR
Assurance WeatherReady
UTQG 700 A A



KUMHO TIRE
Ecsta LX Platinum
UTQG 600 A A



KUMHO TIRE
Majesty 9 Solus TA91
UTQG 560 AA A



KUMHO TIRE
Solus TA31
UTQG 500-480 A A



KUMHO TIRE
Solus TA71
UTQG 600-500 AA-A A



Laufenn
G FIT AS
UTQG 500 A A



MICHELIN
CrossClimate2
UTQG 640 B A



MICHELIN
Premier A/S
UTQG 640 A A



PIRELLI
Cinturato P7
All Season Plus II
UTQG 700 A A



PIRELLI
Cinturato WeatherActive
UTQG 700 A A



PIRELLI
P7 AS Plus 3
UTQG 740 A A



RIKEN
Raptor HR
Raptor VR
UTQG 520 A A



SUMITOMO TIRES
HTR Enhance LX2
UTQG 660-800 A A-B



SUMITOMO TIRES
HTR Enhance WX2
UTQG 500 A A



TOYO TIRES
Celsius
UTQG 440 B A



TOYO TIRES
Celsius II
UTQG 560A A



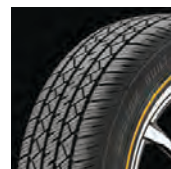
TOYO TIRES
Extensa A/S II A
UTQG 300 B B



VOGUE TYRES
Custom Built Radial
UTQG 460 A A



VOGUE TYRES
Custom Built Radial VIII
UTQG 460 A A



VOGUE TYRES
Custom Built Wide
Trac Touring II
UTQG 460 A A



VREDESTEIN TIRES
HiTrac All Season
UTQG 700 A A



VREDESTEIN TIRES
Quatrac
UTQG 400 A A



VREDESTEIN TIRES
Quatrac 5
UTQG 400 A A



VREDESTEIN TIRES
Quatrac Pro
UTQG 400 A A





BRIDGESTONE

DriveGuard
UTQG 500-460 A A

BRIDGESTONE

DriveGuard Plus
UTQG 640 A A



COOPER TIRES

ProControl
UTQG 740A A

FALKEN

Sincera SN250 A/S
UTQG 720 A A



GOODYEAR

Assurance ComfortDrive
UTQG 700 A A

GOODYEAR

ElectricDrive
UTQG 700 A B



MICHELIN

Primacy MXM4
Primacy MXM4 ZP
UTQG 500-420 AA-A A

MICHELIN

Primacy Tour A/S
UTQG 540 A A



TOYO TIRES

Celsius Sport
UTQG 420 A A

TOYO TIRES

Extensa A/S II
UTQG 620 A A



YOKOHAMA

AVID Ascend GT
UTQG 740 A A

Standard Touring All-Season

You want all-season versatility (including light snow traction) along with enhanced handling and treadwear, as well as good noise and ride comfort.

Branded with the M+S symbol and capable of providing year-round traction (even in light snow), these tires are designed to blend a performance tire's appearance with a passenger tire's smooth, quiet ride. Standard Touring tires are typically available in the lower speed ratings and higher aspect ratio sizes and place more emphasis on ride comfort and treadwear than Grand Touring tires.



Continental

TrueContact Tour
UTQG 800-700 A A-B

COOPER TIRES

CS5 Grand Touring
UTQG 780 A A

Firestone

All Season
UTQG 560 A B



GOODYEAR

Assurance All-Season
UTQG 600 A B

GOODYEAR

Assurance Fuel Max
UTQG 620-540 A A-B

GOODYEAR

Assurance MaxLife
UTQG 820 A B

GOODYEAR

Integrity
UTQG 460 A B

HANKOOK

Kinergy PT
UTQG 860 A A



HANKOOK

Kinergy ST
UTQG 680 A A

KUMHO TIRE

Solus TA11
UTQG 700 A B

MICHELIN

Defender T+H
UTQG 820 A B

MICHELIN

Defender2
UTQG 840 B B

PIRELLI

P4 Four Seasons Plus
UTQG 760 A B



PIRELLI

P4 Persist AS Plus
UTQG 820 A A

UNIROYAL

Tiger Paw AWP II
UTQG 620 A B

VOGUE TYRES

Custom Built Radial VII
UTQG 500 A B

VOGUE TYRES

Vogue Classic White
UTQG 460 A A



YOKOHAMA

AVID Ascend LX
UTQG 800 A A-B

YOKOHAMA

AVID TOURING-S
UTQG 620-520 A A-B

Track & Competition D.O.T.

You want D.O.T.-legal street tires for autocross or racetrack performance.

Never intended to be driven in snow or on ice or even on the street, these special-use tires feature purposeful tread designs, high-grip tread compounds and tuned internal constructions to provide the ultimate in acceleration, cornering and braking traction for track and competition use.



Racetrack & Autocross Only

For enthusiastic drivers wanting D.O.T.-legal tires for dry conditions during racetrack, time attack or autocross competition.



H HOOSIER

A7/R7
UTQG 40 C A

KUMHO TIRE

Ecsta V700
UTQG 50 AA A

TOYO TIRES

Proxes R888
UTQG 100 AA A

TOYO TIRES

Proxes R888R
UTQG 100 AA A

TOYO TIRES

Proxes RA1
UTQG 100 AA A

TOYO TIRES

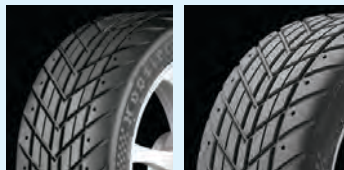
Proxes RR
UTQG 40 C A

YOKOHAMA

ADVAN A055
UTQG 40 C A

Wet Racetrack & Autocross Only

For enthusiastic drivers wanting D.O.T.-legal tires for wet conditions during racetrack, time attack or autocross competition.



H HOOSIER

Radial Wet H20
UTQG 40 C A

H HOOSIER

Radial Wet W2
UTQG 40 C A

Drag Racing Radials

For enthusiast drivers who want specialized, D.O.T.-legal tires focused on providing straight-line grip for hard launches and low elapsed times.



H HOOSIER

D.O.T. Drag Radial
(not for street use)
UTQG 40 C A

H HOOSIER

D.O.T. Drag Radial 2
(not for street use)
UTQG 40 C A

NISSAN

Nitto NT555R11
UTQG 100 A A

TOYO TIRES

Proxes TQ
UTQG 0 B B

Original Equipment Tires

This is a list of tires not mentioned or pictured in the rest of this catalog.

Passenger

BFGoodrich
Radial T/A Spec

BRIDGESTONE
Blizzak LM-500
Blizzak LM-52 RFT
Blizzak LM-60 RFT
Blizzak LM-80 RFT
Blizzak LM005
Blizzak LM005 RFT
Ecopia EP150
Ecopia EP422
Ecopia EP500
Ecopia EP600
Potenza Race
Potenza RE050 RFT
Potenza RE050A II RFT
Potenza RE050A Scuderia
Potenza RE070 RFT
Potenza RE92
Potenza RE92A
Potenza RE97AS
Potenza RE97AS-02
Potenza RE97AS RFT
Potenza S001
Potenza S001 RFT
Potenza S001 I
Potenza S001L
Potenza S001L RFT
Potenza S005
Potenza S007
Potenza S007 RFT
Potenza S-02
Potenza Sport RFT
RE71 Denloc
Turanza 6
Turanza EL400-02
Turanza EL400-02 RFT
Turanza EL400 RFT
Turanza EL42
Turanza EL42 RFT
Turanza EL440
Turanza EL450
Turanza EL450 RFT
Turanza EL470
Turanza ER300 RFT
Turanza ER300A RFT
Turanza ER300-02 RFT
Turanza ER33
Turanza LS100
Turanza LS100 A
Turanza LS100 A RFT
Turanza LS100 RFT
Turanza T005
Turanza T005A
Turanza T005A RFT
Turanza T005 RFT

Continental
ContiEcoContact EP
ContiSportContact 2
ContiSportContact 5
ContiSportContact 5 SSR
ContiTouringContact CV95
ContiWinterContact
TS830 P
ContiWinterContact TS830
P SSR
ExtremeContact DW
PremiumContact 6
PremiumContact 6 SSR
ProContact 6X
ProContact 6X SSR
ProContact RX
ProContact RX SSR
ProContact TX
ProContact TX SSR
SportContact 6
SportContact 6 SSR
WinterContact TS 860 S
WinterContact TS 860
S SSR

DUNLOP
Enasave 01 A/S
Signature II
SP1 A/S
Sport Maxx RT RFOF
Sport Maxx RT2
Sport Maxx RT2 RFOF
SP Sport 5000 DSSST CTT
SP Sport 5000 M
SP Sport 5000
Symmetrical
SP Sport 7000 A/S
SP Sport 7010 A/S DSSST
SP Sport Maxx
SP Sport Maxx 050
SP Sport Maxx 050
DSSST CTT
SP Sport Maxx 060
SP Sport Maxx A1 A/S
SP Sport Maxx A1 A/S
DSSST
SP Sport Maxx A2 A/S
SP Sport Maxx GT
SP Sport Maxx GT 600
SP Sport Maxx GT 600
DSSST
SP Sport Maxx GT 600 A
SP Sport Maxx GT DSSST
Sport Maxx RT
Ultra Grip Performance
Gen-1

FALKEN
Azenis FK001 A/S
Sincera SN250A A/S

Firestone
Affinity Touring
Firehawk GT
FR710
FR740
FT140

GOODYEAR
Assurance Finesse
Eagle F1 Asymmetric
Eagle F1 Asymmetric
2 RFOF
Eagle F1 Asymmetric
All-Season RFOF
Eagle F1 Asymmetric 5
Eagle F1 Asymmetric
5 (M-S)
Eagle F1 Asymmetric
5 RFOF
Eagle F1 GS EMT
Eagle F1 GS-2 EMT
Eagle F1 Supercar
Eagle F1 Supercar G:2 RFOF
Eagle F1 SuperSport
Eagle F1 SuperSport R
Eagle GT II
Eagle LS
Eagle LS-2
Eagle LS-2 RFOF
Eagle RS-A
Eagle RS-A2
Eagle Sport All-Season
RFOF
Eagle Touring
Eagle Touring RFOF
Efficient Grip Performance
RFOF
Efficient Grip RFOF
Excellence
Excellence RFOF
Radial LS (limo tire)

HANKOOK
Kinergy Eco
Kinergy GT
Kinergy GT HRS
Optimo H426
Optimo H426B HRS
Optimo H428
Optimo H725
Optimo H725A
Ventus Prime 2
Ventus Prime 2 HRS
Ventus Prime 3
Ventus Prime 3 HRS
Ventus S1 AS
Ventus S1 evo Z
Ventus S1 evo2
Ventus S1 evo2 HRS
Ventus S1 evo3
Ventus S1 evo3 HRS
Ventus evo3 ev
Ventus S1 noble2 HRS
Ventus TD
Ventus V4 ES H105
Ventus V12 evo K110

IRELLI
Cinturato P1 Run Flat
Cinturato P7 All Season
Cinturato P7 All Season
Run Flat
Cinturato P7 (P7C2)
Cinturato P7 Blue
Cinturato P7
Run Flat (P7C2)
P6000
P Zero All Season
P Zero All Season
Run Flat
P Zero Nero
P Zero System (Collezione)

KUMHO TIRE
Majesty Solus
Solus KH16
Solus KH25
Solus TA31+

MICHELIN
Energy LX4
Energy Saver A/S
Pilot Exalto PE2
Pilot Sport 3
Pilot Sport 3 ZP
Pilot Sport 4
Pilot Sport 4 ZP
Pilot Sport A/S 3
N-Spec
Pilot Sport A/S Plus
N-Spec
Pilot Sport A/S ZP
Pilot Sport All Season 4 ZP
Pilot Sport Cup 2 (240)
Pilot Sport Cup 2 ZP
Pilot Sport EV
Primacy 3
Primacy 3 ZP
Primacy 4
Primacy A/S
Primacy HP
Primacy MXV4
Primacy Tour A/S ZP

NGN
Classe Premiere CP662
Classe Premiere CP671 H
N Priz EV
N FERA A07
N FERA Sport
N Priz AH8
N Priz S

TOYO TIRES
A20
A22
NanoEnergy A29
NanoEnergy A41
Proxes 4 Plus A
Proxes A18
Proxes A20
Proxes A27
Proxes A35
Proxes A37
Proxes A40
Proxes R35
Proxes Sport A/S
Proxes T1 Sport

YOKOHAMA
A-008
A-008P
ADVAN A11A
ADVAN A82A
ADVAN A83A
ADVAN A83B
ADVAN Neova A07
ADVAN Sport
ADVAN Sport V105G
ADVAN Sport V107
ADVAN Sport V107D
ADVAN Sport V107E
ADVAN Sport V107F
AVID GT
Avid GT S35A
AVID S30B
AVID S30D
AVID S33B
AVID S33D
AVID S34B
AVID S34D
AVID S34F
AVID S34P
AVID S34FA
AVID S34FV
AVID S34RV
BlueEarth S34TZ

Streetable Track & Competition

For enthusiastic drivers wanting D.O.T.-legal street tires that allow you to drive to, from and at the racetrack on the same tires.



DUNLOP
Sport Maxx Race 2
UTQG 80 AA - A



GOODYEAR
Eagle F1 Supercar 3R
UTQG 100 AA A



DUNLOP
Sport Maxx Race 2
UTQG 80 AA - A



GOODYEAR
Eagle F1 Supercar 3R
UTQG 100 AA A



MICHELIN
Pilot Sport Cup 2 R
UTQG 140-40 A A



IRELLI
P Zero Corsa (PZC4)
UTQG 80-60 AA A



IRELLI
P Zero Corsa System
Asimmetrico/Asimmetrico 2
UTQG 80-60 AA A



IRELLI
P Zero Corsa System
Direzionale
UTQG 60 AA A



IRELLI
P Zero Trofeo R
UTQG 60 AA A



YOKOHAMA
ADVAN A048
(Medium or Medium Hard)
UTQG 60 AA-A A

Light Truck

BRIDGESTONE
Alenza 001
Alenza 001 RFT
Alenza A/S 02
Alenza A/S 02 RFT
Alenza HL 33
Alenza Sport A/S
Alenza Sport A/S RFT
Blizzak LM-25 4X4 RFT
Dueler A/T D693 III
Dueler A/T RH-S
Dueler HL 33
Dueler HL 400
Dueler HL 400 RFT
Dueler HL 422 Ecopia
Dueler HL Alenza
Dueler H/P 92A
Dueler H/P Sport AS
Dueler H/P Sport AS RFT
Dueler H/D 684 II
Dueler H/T D687
Dueler H/T D689
Dueler H/T D840
Duravis R500 HD
Ecopia HL 422 Plus
(Original Equipment)
Ecopia HL 422 Plus RFT
R265 5-Rib

Continental
4x4 Contact
4x4 Contact SSR
ContiSportContact 2
SSR
ContiSportContact 5
SSR SUV
ContiTrac
CrossContact ATR
CrossContact LX
CrossContact LX Sport
CrossContact LX20 with
EcoPlus Technology
CrossContact LX
Sport SSR
CrossContact RX
CrossContact UHP
VanContact A/S

COOPER TIRES
Discoverer SRX LE

DUNLOP
Grandtrek AT20
Grandtrek AT23
Grandtrek PT2A
Grandtrek PT3A
Grandtrek PT21
Grandtrek PT15A
Grandtrek ST30
Grandtrek Touring A/S
Ultra Grip Performance
SUV Gen-1

Firestone
Destination A/T
Destination LE 2
Transforce AT
Transforce HT

FALKEN
Azenis FK510A SUV
Wildpeak A/T3W
Wildpeak A/T3W A
Wildpeak A/T Trail 01A
Wildpeak H/T HT01A
Wildpeak M/T
ZiEX CT50 A/S
ZiEX ZE001 A/S
ZiEX ZE001A A/S

GENERAL TIRE
AmeriTrac
AmeriTrac TR
Grabber A/T3
Grabber A/T Sport-W
Grabber A/T Sport-W

Giti
GitiComfort XA1

GOODYEAR
Assurance CS Fuel Max
Eagle F1 Asymmetric SUV
Eagle F1 Asymmetric
SUV-4x4
Eagle F1 Asymmetric
SUV-4x4 RFOF
Eagle F1 Asymmetric
AT SUV-4x4
Eagle F1 Asymmetric
2 SUV-4x4
Eagle F1 Asymmetric
3 SUV
Fortera HL Edition
Wrangler All-Terrain
Adventure
Wrangler All-Terrain
Adventure w/Kevlar
Wrangler AT/S
Wrangler Enforcer AT
Wrangler Fortitude HT
Wrangler HT
Wrangler HP
Wrangler SR-A
Wrangler ST
Wrangler Territory AT
Wrangler Territory AT/S
Wrangler Territory HT
Wrangler Territory MT
Wrangler Territory RT

HANKOOK
DynaPro AS RH03
DynaPro HP2 Plus
Kinergy AS X EV
Ventus AS RH07
Ventus S1 evo3 SUV
Ventus S1 evo3 SUV HRS

JKTYRE
America Cargo

KUMHO TIRE
Solus KL21

MICHELIN
4x4 Diamaris
Agilis LTX
Latitude Cross
Latitude tour
Latitude tour HP
Latitude tour HP ZP
LTX A/S
LTX A/T 2
LTX M/S2
LTX Trail
Pilot Sport 4 SUV ZP
Premier LTX
Primacy LTX
Primacy XC
Run Flat

NGN
N Fera RU1
N Priz RH7
N Priz RHTA
Roadian AT Pro RA8
Roadian C18 HL
Roadian GTX
Roadian HTX RH5

IRELLI
Scorpion
Scorpion ATR
Scorpion STR
Scorpion Verde
Scorpion Verde All Season
Scorpion Verde All Season
Run Flat
Scorpion Verde Run Flat
Scorpion Zero
Scorpion Zero All Season
Scorpion Zero All Season
Run Flat

TOYO TIRES
A23
A24
A36
A45
Celsius CUV A
Open Country A20
Open Country A25A
Open Country A26
Open Country A30
Open Country A31
Open Country A39
Open Country A43
Open Country A46
Open Country HI-D
Open Country HI-I

SUMITOMO
Touring LX T

YOKOHAMA
ADVAN S.T.
AVS S/T
Geolander G91A
Geolander G91AV
Geolander G91F
Geolander G91FV
Geolander G91HV
Geolander G96B
Geolander G033
Geolander G055
Geolander G055G
Geolander H/T G038G
Geolander H/T G056B
Geolander H/T G900
Geolander H/T G95A
Geolander SUV G055E
Geolander X-CV G99

Winter

Performance Winter/Snow

You want enhanced dry road handling from your winter tires and are willing to trade some snow and ice traction to get it.

Meeting severe snow service requirements and branded with the "Mountain/Snowflake" symbol, these low profile, H- or V-speed rated tires are designed to suit winter driving on European highways. They are available in many of the low profile sizes used as Original Equipment on sporty imported and domestic cars. Due to their unique designs these tires must be installed in sets of four.



BRIDGESTONE
Blizzak LM-25 RFT



BRIDGESTONE
Blizzak LM-32



BRIDGESTONE
Blizzak LM001
Blizzak LM001 RFT



Continental
WinterContact TS 850 P



DUNLOP
SP Winter Sport 3D
SP Winter Sport 3D
DSST R0F



DUNLOP
SP Winter Sport 4D



Firestone
Firehawk PVS



MICHELIN
Pilot Alpin PA4
Pilot Alpin PA4 ZP



MICHELIN
Pilot Alpin PA4 N-Spec



MICHELIN
Pilot Alpin 5



PIRELLI
P Zero Winter
P Zero Winter Run Flat



PIRELLI
Winter Sottozero



PIRELLI
Winter Sottozero Serie II
Winter Sottozero Serie II
Run Flat



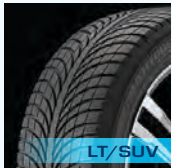
PIRELLI
Winter Sottozero 3
Winter Sottozero 3
Run Flat



YOKOHAMA
BluEarth Winter V905



VREDESTEIN
TIRES
Wintrac Pro



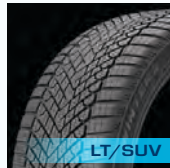
MICHELIN
Latitude Alpin LA2



MICHELIN
Pilot Alpin 5 SUV



PIRELLI
Scorpion Ice & Snow
Run Flat



PIRELLI
Scorpion Winter 2



PIRELLI
Scorpion Winter
Run Flat

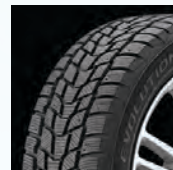


YOKOHAMA
BluEarth Winter V906
SUV

Studdable Winter/Snow

You want winter tire studs for traditional traction on ice.

Meeting severe snow service requirements, these tires feature traditional winter compounds and tread designs that can be studded for traction in snow and on ice. Use of studded tires is often prohibited or restricted. Check with local authorities to confirm legality. Must be used in sets of four.



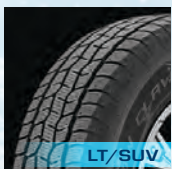
COOPER TIRES
Evolution Winter



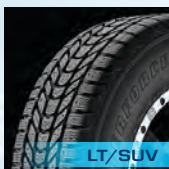
Firestone
Winterforce 2



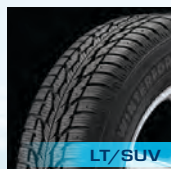
GENERAL TIRE
AltiMAX Arctic 12



COOPER TIRES
Discoverer Snow Claw



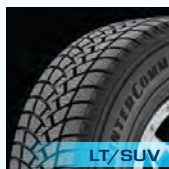
Firestone
Winterforce LT



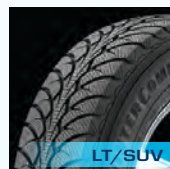
Firestone
Winterforce 2 UV



GENERAL TIRE
Grabber Arctic LT



GOODYEAR
WinterCommand (LT)



GOODYEAR
WinterCommand (SUV)

Studless Ice & Snow

You want to maximize snow and ice traction from your winter tires without the inconvenience of using winter tire studs.

Meeting severe snow service requirements and branded with the "Mountain/Snowflake" symbol, these Q-speed rated tires feature the latest in tread compound technology to provide winter traction without the inconvenience of tire studs. They trade a little handling for excellent ice and snow traction. Due to their unique tread compounds these tires must be installed in sets of four.



BRIDGESTONE

Blizzak WS90

Continental

VikingContact 7
VikingContact 7 SSR

COOPER TIRES

Discoverer True North

DUNLOP

Winter Maxx WM02



GOOD YEAR

WinterCommand Ultra

MICHELIN

Latitude X-Ice Xi2 ZP

MICHELIN

X-Ice SNOW

MICHELIN

X-Ice SNOW SUV



VEDESTEIN

Snowtrac 5

YOKOHAMA

iceGUARD iG52c

YOKOHAMA

iceGUARD iG53



BRIDGESTONE

Blizzak DM-V2

BRIDGESTONE

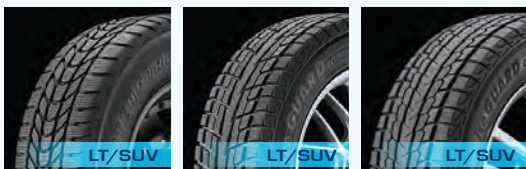
Blizzak LT

DUNLOP

Grandtrek SJ6

DUNLOP

Winter Maxx SJ8



Firestone

Winterforce CV

YOKOHAMA

iceGUARD iG51v

YOKOHAMA

iceGUARD G075



Highway Rib Summer

Your pickup, van, SUV or motor-home uses heavy-duty tires designed to provide on-road traction in dry and wet conditions.

These heavy-duty light truck/SUV tires feature rib-type tread designs developed primarily for street and highway use. They emphasize even wear, low noise and good traction on dry and wet roads, but like all summer tires, are not intended to be driven in near-freezing temperatures, through snow or on ice.



Continental

Conti Hybrid HS3

Continental

Conti HSR+



MICHELIN

XPS Rib

MICHELIN

XRV



YOKOHAMA

Y356

Street/Sport Truck Summer

You want a sport truck appearance and dry and wet road performance for your pickup, crossover or SUV.

These wide, low profile and large rim diameter tires enhance a vehicle's looks and performance when used to replace most Original Equipment tires. They emphasize traction and handling in dry and wet conditions, but like all summer tires, are not intended to be driven in near-freezing temperatures, through snow or on ice.



BRIDGESTONE

Dueler H/P Sport
Dueler H/P Sport RFT
UTQG 300 AA

Continental

ContiSportContact 5 SUV
UTQG 420-280 AA A



FALKEN

Azenis FK510 SUV
UTQG 300 AA A



GENERAL TIRE

Grabber UHP
UTQG 360-320 A A



HANKOOK

Ventus S1 ev2 SUV
UTQG 220 AA A



MICHELIN

Latitude Sport
UTQG 220 AA A



MICHELIN

Latitude Sport 3
Latitude Sport 3 ZP
UTQG 220 AA A



MICHELIN

Pilot Sport 4 SUV
UTQG 220 AA A

Crossover/SUV Touring All-Season

You want a stylish appearance, sophisticated comfort and all-season on-road traction for your upscale crossover, SUV or luxury pickup.

These tires combine the sporty appearance of Street/Sport Truck tires with much of the ride quality and noise comfort associated with Highway All-Season tires. While they offer all-season versatility, including traction in light snow, tire sizes featuring extremely wide tread widths may limit the traction this type of tire can provide in deep snow.



BFGoodrich

Advantage T/A Sport LT
UTQG 660 B A



BRIDGESTONE

Alenza AS Ultra
UTQG 680 A A



BRIDGESTONE

Dueler H/L Alenza Plus
UTQG 800-540 A A-B



Continental

CrossContact LX25
UTQG 740 A B



COOPER TIRES

Discoverer EnduraMax
UTQG 640 A A



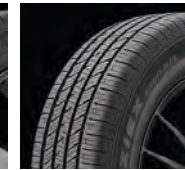
COOPER TIRES

Discoverer SRX
UTQG 740 A A



COOPER TIRES

Endeavor Plus
UTQG 680 A A



FALKEN

ZIEX CT60 A/S
UTQG 680 A A



HANKOOK

Dynapro HP2
UTQG 640-540 A A



HANKOOK

Kinergy 4S2 X
UTQG 640-500 A A



KUMHO TIRE

Crugen HP71
UTQG 640 A A



KUMHO TIRE

Crugen Premium
UTQG 440-400 A A



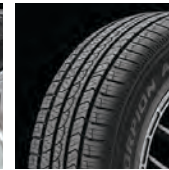
MICHELIN

CrossClimate SUV
UTQG 580 A A



MICHELIN

CrossClimate2 SUV
UTQG 560 B A



PIRELLI

Scorpion AS Plus 3
UTQG 800 A A



PIRELLI

Scorpion Strada All Season
UTQG 740 A A



PIRELLI

Scorpion WeatherActive
UTQG 700 A A



SUMITOMO TIRES

HTR Enhance CX2
UTQG 680-600 A A-B



TOYO TIRES

Celcius CUV
UTQG 520 A B



UNIROYAL

Laredo
Cross Country Tour
UTQG 540 B A



VOGUE TYRES

Custom Built
Radial SCT2
UTQG 460 A A



VOGUE TYRES

Custom Built Radial
XIII SCT
UTQG 460 A A



YOKOHAMA

Geolandar CV G058
UTQG 740 A A



YOKOHAMA

Geolandar X-CV
UTQG 520 A A

Street/Sport Truck All-Season

You want a sport truck appearance and year-round performance for your pickup, crossover or SUV.

These wide, low profile and large rim diameter tires enhance a vehicle's looks and performance when used to replace most Original Equipment tires. While they offer all-season versatility, including traction in light snow, tire sizes featuring extremely wide tread widths may limit the traction this type of tire can provide in deep snow.



GOODYEAR
Fortera SL Edition
UTQG 420 A B

HANKOOK
Ventus ST RH06
UTQG 420 A A



KUMHO TIRE
Ecsta STX KL12
UTQG 420 A A



PIRELLI
Scorpion Zero All
Season Plus
UTQG 500 A A



PIRELLI
Scorpion Zero
Asimmetrico
UTQG 520-420 AA-A A



TOYO TIRES
Proxes ST III
UTQG 500 A A



YOKOHAMA
ADVAN Sport V35A
UTQG 440 A A



YOKOHAMA
Parada Spec-X
UTQG 420 A A

Highway All-Season

You want pleasing comfort, predictable handling and all-season on-road traction for your crossover, SUV or pickup.

These tires typically feature independent tread blocks and multiple sipes positioned around the tire to combine good on-road (including gravel and dirt roads) poise with foul-weather traction. They are branded with the M+S symbol and capable of providing all-season versatility, including traction in light snow.



BFGoodrich
Commercial T/A
All-Season 2



BRIDGESTONE
Dueler H/T 685
UTQG 520 A B



Continental
TerrainContact H/T
UTQG 800 A B



Continental
VancoFourSeason
UTQG 280 A A



COOPER TIRES
Discoverer HT3



Firestone
Destination LE3
UTQG 700 A B



Firestone
Transforce CV
UTQG 500 B B



Firestone
Transforce HT2



FUZION
SUV
UTQG 460 A B



GENERAL TIRE
Grabber HD



GENERAL TIRE
Grabber HD Van



GENERAL TIRE
Grabber HTS 60
UTQG 680-660 A A-B



GOODYEAR
Wrangler Steadfast HT
UTQG 800 A B



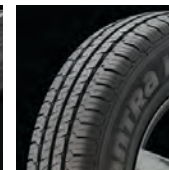
GOODYEAR
Wrangler Workhorse HT
UTQG 620 A B



HANKOOK
Dynapro HT RH12
UTQG 700-380 A-B A-B



HANKOOK
Smart Flex AH35



HANKOOK
Vantra LT



KUMHO TIRE
Crugen HT51
UTQG 720 A A



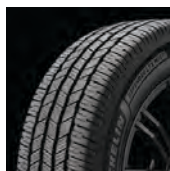
LAUFENN
X FIT HT
UTQG 620 A B



MICHELIN
Agilis CrossClimate



MICHELIN
Defender LTX M/S
UTQG 800-720 A A



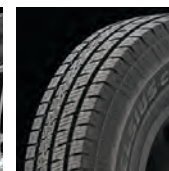
MICHELIN
Defender LTX M/S2
UTQG 820 B A



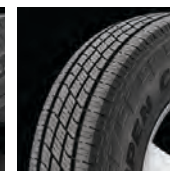
NEXEN
Roadian CT8 HL



SUMITOMO TIRES
Encounter HT2
UTQG 640 A B



TOYO TIRES
Celsius Cargo



TOYO TIRES
Open Country H/T II
UTQG 740 A A



VREDESTEIN TIRES
Pinza HT
UTQG 700 A A



YOKOHAMA
Geolandar H/T G056
UTQG 720 A A-B

Meets severe snow service requirements.

Department of Transportation Uniform Tire Quality Grading System ratings are only assigned to P-metric and Euro-metric sized tires. They are not required for winter tires or Flotation, LT-metric, Metric or Numeric sized light truck tires.

On-Road All-Terrain

Focused on on-road traction with some off-road capability. Reduced off-road prowess for on-road comfort.



BFGoodrich
Trail-Terrain T/A
UTQG 660 A A



BRIDGESTONE
Dueler A/T Revo 3
UTQG 540 A B



Continental
TerrainContact A/T
UTQG 680 A A-B



COOPER TIRES
Discoverer AT3 4S
UTQG 620 A B



COOPER TIRES
Discoverer AT3 LT



COOPER TIRES
Discoverer AT3 XLT



FALKEN
Wildpeak A/T Trail
UTQG 680 A A



GENERAL TIRE
Grabber APT
UTQG 520 A B



HANKOOK
Dynapro AT2
UTQG 660 A B



HANKOOK
Dynapro AT2 Xtreme
UTQG 600 A B



HANKOOK
Dynapro AT-M
UTQG 560 A A-B



KUMHO TIRE
Road Venture AT51
UTQG 540 A A



KUMHO TIRE
Road Venture AT52
UTQG 680 A A



NITTO
Nomad Grappler
UTQG 540 A A



NITTO
Terra Grappler G2
UTQG 600 A B



REDESTEIN TIRES
Grip Classic
UTQG 400 A A



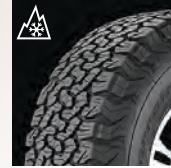
REDESTEIN TIRES
Pinza AT
UTQG 650 A B



YOKOHAMA
Geolander A/T G015 (LT)
Geolander A/T G015 (P)
UTQG 600 A B

Off-Road All-Terrain

Capable both on- and off-road, with much more off-road toughness than highway tires. A balance of traction on both paved and unpaved roads, with the potential trade-off of comfort and noise.



BFGoodrich
All-Terrain T/A K02



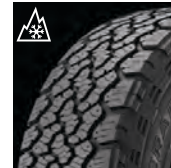
BFGoodrich
All-Terrain T/A K03



Firestone
Destination A/T2
UTQG 540 A B



Firestone
Destination X/T



GENERAL TIRE
Grabber A/TX
UTQG 640 A B



GOODYEAR
Wrangler TrailRunner AT
UTQG 580 A B



GOODYEAR
Wrangler Workhorse AT
UTQG 580 A B



NITTO
Recon Grappler A/T
UTQG 600 A B



PIRELLI
Scorpion All Terrain Plus
UTQG 640 A B



SUMITOMO TIRES
Encounter AT
UTQG 660 A B



TOYO TIRES
Open Country A/T III
UTQG 600 A B



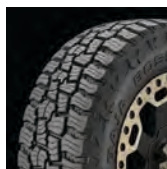
YOKOHAMA
Geolander X-AT

Rugged All-Terrain

Aggressive aesthetics with moderate off-road capability. A balance of traction on both paved and unpaved roads, with the potential trade-off of comfort and noise.



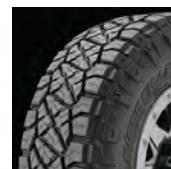
COOPER TIRES
Discoverer Rugged Trek
UTQG 600 A B



MICKEY THOMPSON
Baja Boss A/T
UTQG 600 A B



MICKEY THOMPSON
Baja Legend EXP



NITTO
Ridge Grappler
UTQG 500 A B



TOYO TIRES
Open Country R/T





Toyota Tacoma with 17" Method Race MR305 NV Bahia Blue w/Gloss Black Lip (page AG)

Commercial All-Terrain

Heavy-duty construction and varied tread designs deliver a higher level of durability, chip and tear resistance and longevity in unpaved conditions or at unimproved job sites. Reasonable on-road and winter traction.



BFGoodrich
HD-Terrain T/A KT



BRIDGESTONE
Duravis M700 HD



Continental
Conti HDR+



Continental
Conti Hybrid HD3



COOPER TIRES
Discoverer S/T Maxx



Firestone
Transforce AT2



GOODYEAR
Wrangler DuraTrac



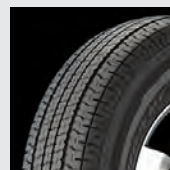
HANKOOK
DH07



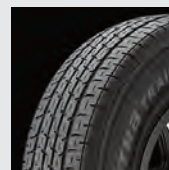
YOKOHAMA
Geolandar A/T XD

Trailer Service

You want heavy-duty, special trailer service tires for your boat, camper, motorcycle or utility trailer.



GOODYEAR
Endurance



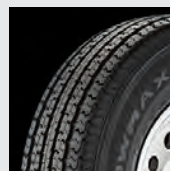
HANKOOK
Vantra Trailer



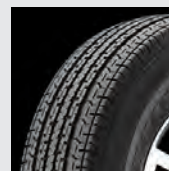
HANKOOK
Vantra Trailer TH31



MAXXIS
M8008 Plus



POWER KING
TowMax STR II



POWER KING
TowMax Vanguard

Off-Road Maximum Traction

Focused on maximum off-road traction at the expense of on-road civility and wear life. Modest winter traction.



BFGoodrich
Mud-Terrain T/A KM2



BFGoodrich
Mud-Terrain T/A KM3



COOPER TIRES
Discoverer STT PRO



COOPER TIRES
Evolution M/T



Firestone
Destination M/T2



GENERAL TIRE
Grabber X3



GOODYEAR
Wrangler Enforcer MT



GOODYEAR
Wrangler MT/R
With Kevlar



HANKOOK
Dynapro MT2



KUMHO TIRE
Road Venture MT51



KUMHO TIRE
Road Venture MT KL71



KUMHO TIRE
Road Venture MT71



TOYO TIRES
Open Country M/T



YOKOHAMA
Geolandar M/T G003



YOKOHAMA
Geolandar X-MT